

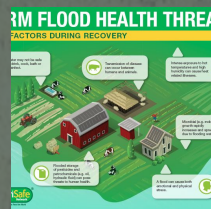
# OUR FOOTPRINT 2017



**CLINICAL  
CHANGES**



**SPECIAL  
POPULATIONS**



**RAPID RESPONSE**



**Protecting the People Who Feed the World**

# READY TO SERVE

## AGRISAFE TEAM - PASSIONATE PUBLIC HEALTH ADVOCATES

Farmers and ranchers work hard every day to produce food, fiber and fuel. Most are self-employed which means they don't have the luxury of a human resource coordinator or occupational health nurse. AgriSafe team recognizes that farmers are a under-served population. We aim to increase their access to rural health professionals who understand the risks of agriculture production.

Our team of five is powered by the energy of countless volunteers who remind us that we are not alone. We are grateful to our partners, volunteers, interns and stakeholders in 2017. Together we have made an impact worth sharing.



from front to back  
**Natalie Roy, MPH**  
**Executive Director**

**Charlotte Halverson, BSN, COHN-S**  
**Clinical Director**

**Linda Emanuel, RN**  
**Community Nurse**

**Knesha Rose Davison, MPH**  
**Health Communications Dir.**

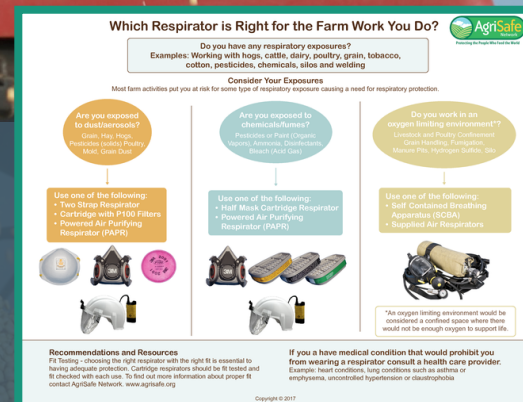
**Stacey Jenkins, BS**  
**Distance Education Dir.**

## PROTECTING GRAIN HANDLERS

AgriSafe is among 80 nonprofit organizations who received FY 17 training grants from the U.S Department of Labor's Occupational Safety and Health Administration (OSHA). AgriSafe, in partnership with the National Education Center for Agricultural Safety (NECAS), provided health and safety training to grain handling workers through webinars and workshops. Target audiences include agricultural producers, workers in high-hazard grain operations and English and non-English speaking grain handling workers. Training topics included confined space grain bin entry, respiratory protection program and prevention strategies.



AgriSafe produced a new tool for producers to help identify respiratory exposures and determine which respiratory protection to use.



**AGRISAFE LAUNCHED A RAPID RESPONSE TO HURRICANES OF SUMMER 2017.  
PARTNERS INCLUDED STATE FARM BUREAUS, EXTENSION, LOCAL, STATE AND  
FEDERAL PUBLIC HEALTH AGENCIES & NIOSH AG CENTERS**

# EMERGENCY PREPAREDNESS

## Farm Flood Webinars

Provided attendees with key information as restoration efforts began in Texas and Louisiana following **Hurricane Harvey**

*“Good information and timely since hurricane Harvey has caused much flooding. Thank you for providing this excellent overview of the hazards for farm flooding.”*

Ann Rivers, USDA APIS PPQ Science and Technology

*“We cannot express how very helpful this presentation was. The experts were very informative and I look forward to downloading the slides to review when we are faced with an event/disaster. Thank you.”*

Frances Ashley, Carson City Health and Human Services

## FARM FLOOD HEALTH THREATS

### RISK FACTORS DURING RECOVERY



Farm Flood Health resource created to address the unique health threats that farm producers face during and after a flood. This guide, the first of its kind, highlights key health prevention tips that Ag producers can follow to stay safe and healthy.

# ZIKA-REDUCING THE THREAT THROUGH EDUCATION

**Zika Virus Protection for Outdoor Workers** Outdoor workers may be at the greatest risk of exposure to Zika virus, which is primarily spread through the bites of infected mosquitoes. AgriSafe partnered with the Center for Disease Control and Prevention (CDC) who presented a webinar to **60** people from **23** states, addressing questions and concerns of the agricultural community. (Feb. 28, 2017)



*AgriSafe is an international organization representing health and safety professionals who strive to reduce health disparities found among the agricultural community.*

## DIGITAL AND SOCIAL MEDIA FOOTPRINT



### #RURALHEALTHCHAT ON TWITTER

Rural Health Information Hub (@RuralHealthInfo), AgriSafe and Co-hosts from several ag health and safety organizations, participated in an online Twitter Chat August 24th to discuss Agricultural Health and Safety.

### SOCIAL MEDIA

AgriSafe launched a **LinkedIn** company page August 2017. In 2017, we had over 50 followers and 141 page views from health and safety managers and healthcare professionals.

**Facebook** likes increased by **13.4%** with **785** followers. AgriSafe reached over **30.7K** with posts; **1,621** clicks on content, and **533** comments, reactions and/or shares.

**9,248** Users visited our website

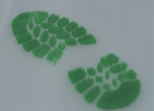
**9,148** New users to our website

**4,505** Read AgriSafe in Action Newsletter  
(80% increase)



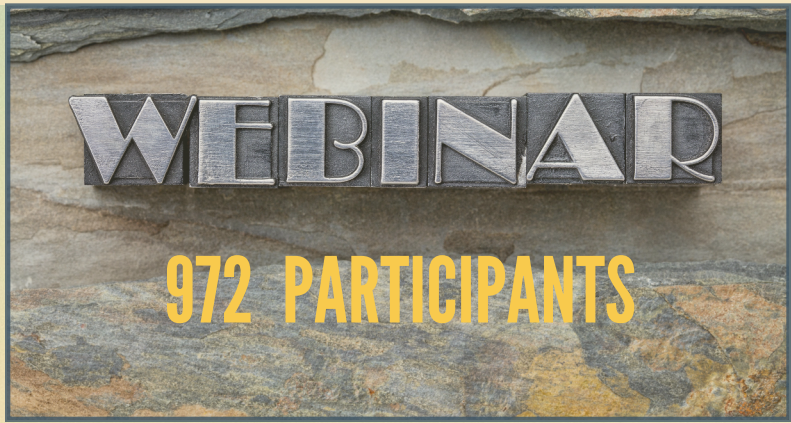
## 2017 INVITED WEBINAR SPEAKERS

OVER 75 VOLUNTEER HOURS



*AgriSafe Network gratefully acknowledges the expertise and time that each of these speakers dedicated to present an educational webinar in 2017:*

*Marsha Salswedel, MS \* Abigail Smith, RN \* Ellen Duysen, MPH \* Jill Poole, MD  
Jordan Jensen David Douphrate PhD, MPT, MBA, CPE, CSP \* Aaron Yoder, PhD  
Vanessa Casanova, PhD, MS, BA Jessica Wilburn, RN MSN \* Anna Meyerhoff \*  
Melissa Horsman \* Sarah Hunt, BAN, MSN, FNP-BC \* Kelly Cochran, PharmD, BCPS*

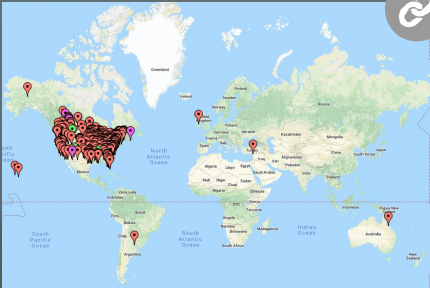


*97% of webinar attendees  
learned something new*

**300+ TRAINED**  
TOTAL FARMER HEALTH™



# TRAINING IMPRESSIONS



click on  
interactive  
map to  
view  
trainings

**600+ YOUTH TRAINED**



**Invest in Your Health**  
Educate. Prevent. Protect.

**300+ TRAINED**

**200 + HOURS OF  
TECHNICAL  
ASSISTANCE**

# NATIONAL FARM

Safety and Health Week

**SEPTEMBER 17-23, 2017**

**AGRISAFE WEBINAR PRESENTATION TOPICS**

Respiratory Protection and On-Farm Fit Testing | Staying Cool in Your Region's Heat | ATV Safety and Training Materials | Children and Youth: Living, Working and Playing Safely on Farms | Prevention Strategies to Reduce Respiratory Exposures and Illness in Agriculture

# SERVING SPECIAL POPULATIONS FROM ACROSS THE COUNTRY

## PROTECTING HUTTERITES

AgriSafe Network joined Montana Pork Producers Council and trained over **200** members on the importance of respiratory safety and the variety of health and safety resources available to ensure safe working environments. Charlotte Halverson, BSN, COHN-S, AgriSafe Occupational Health Nurse, conducted the specialized training and was delighted with the audiences enthusiastic participation in the safety demonstrations.



## PROTECTING NON ENGLISH SPEAKING PRODUCERS

AgriSafe recognizes the diversity of agricultural workers. In 2017, AgriSafe began translating key resources for spanish speaking farmers. In addition, AgriSaffe partnered with Dr. Cassanova, from The University of Texas Health Sciences Center at Tyler on , "Engaging Guestworkers in Occupational Safety Research in Forestry." This webinar advocated on behalf of better working conditions for guest-workers.



## AG PRODUCER & NURSE -LINDA EMANUEL JOINS AGRISAFE TEAM

A producer, state leader, and nurse, Linda brings unique perspectives to the AgriSafe team. Linda serves as a Community Health Nurse assisting with outreach education for producers and ag employers.

During her 30+ years working in a variety of health care specialty areas, she and her husband, raised three sons and built a successful row crop operation that welcomes the next generation home to diversify their business.

Linda is a lifetime advocate of good health and wellness which is why it was a natural transition for her to pursue her passion as a member of the AgriSafe team.

# PROTECTING WOMEN

IN PARTNERSHIP WITH CS-CASH



AgriSafe launched a new partnership with **FarmHer**, a company which documents women in agriculture through photography. AgriSafe presented at "I am FarmHer" Mini Series December 5, 2017 in Sheffield, IA. AgriSafe introduced its resources for women, including our Women's fact sheet and the newly revised Women's Ag Health Risk Assessment. AgriSafe authored a *FarmHer* Blog that launched in December 28, 2017 with a focus on healthy habits for the new year. The new partnership with FarmHer is estimated to reach thousands of farm women throughout the US each year.

AgriSafe partnered with CS-CASH staff at various events throughout Nebraska in an effort to raise awareness among farm women regarding preventive steps to stay well.

CS-CASH generously donated booth space and assisted in creating successful events at several large farm shows.



1,155 Youth Trained

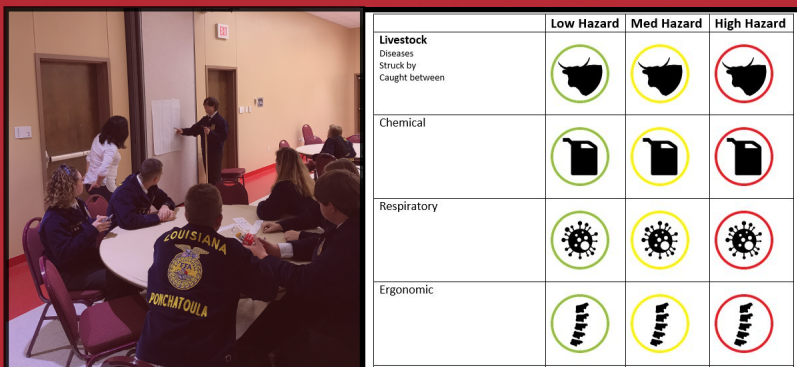
# PROTECTING YOUTH

## Five Courses\*

- 1) **Say What?** Protecting your hearing
- 2) **Cover up!** Head to Toe PPE
- 3) **Stay Cool!** Prevent Heat Illness
- 4) **Stop Zoonosis in its Tracks**
- 5) **Where Y'at-Hazard Mapping**

*"FarmHer realizes the importance of farm safety and AgriSafe allows us to share tactical and useful information with FarmHers to keep them safe on their farm."*

-Lexi Marek, FarmHer



Hazard Mapping with Louisiana FFA Students

	Low Hazard	Med Hazard	High Hazard
Livestock Diseases Struck by Caught between			
Chemical			
Respiratory			
Ergonomic			

# CHANGING CLINICAL PRACTICES

AgriSafe was formed in 2003 by rural nurses who believed that together they could improve the health and safety of farmers and ranchers. Today, AgriSafe builds the competency of health and safety professionals to deliver exceptional occupational agricultural health care.



## Webinar CNE Offerings



Jill Poole, MD



Sarah Hunt, FNP-BC



AgriSafe designed and secured pilot funds to launch the *Nurse Scholar Program*



Free AgriSafe memberships for nurses during National Rural Health Week

## Webinars:

Allergic and Non-Allergic Respiratory Disease Among Farmers

Respiratory Health of Agricultural Producers in Clinical Practice

American Association of Occupational Health Nurses, New Orleans, LA

# SUPPORT AND REVENUE

Grant Income.....	\$ 451,496
Membership Dues.....	\$ 10,825
Miscellaneous Income.....	\$ 24,616
Interest.....	\$ 52

**TOTAL SUPPORT  
& REVENUE.....**\$ 486,989

**TOTAL EXPENSES.....**\$ 458,295

Change In Net Assets.....\$ 41,213

Net Assets at Start of Year.....\$ 116,116

Net Assets at End of Year.....\$ 157,329

The AgriSafe Network is a 501(c)3 charitable organization, and all donations are tax deductible to the extent allowed by law. The Network makes every effort to be fiscally responsible and transparent with funds.

OUR  
SUPPORTERS



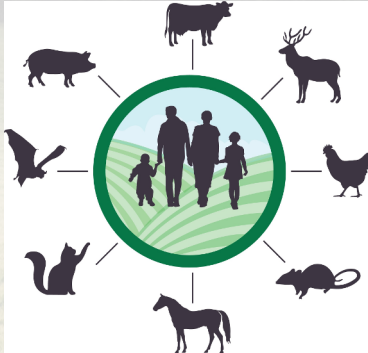
AgHealth  
Central States  
Center for Agricultural  
Safety and Health



CHS Foundation

OUR MEMBERS





Protecting the People Who Feed the World

## INTERNS PAVE A PATH

AgriSafe engaged Young Advisor Council Member, Katelyn Haydett, M.S. from East Texas to develop a youth targeted curriculum on Zoonotic Disease.

Marlon Nunez Sanchez served as our summer Health Communications intern, with a strong interest in Environmental Health and Agriculture, Marlon assisted in the Spanish translation of AgriSafe resources and expanded AgriSafe's presence in social media.

[www.agrisafe.org](http://www.agrisafe.org)