

AgriSafe Network Year in Review 2014

200 unique new partnerships and requests for technical assistance

Wellness Champions

AgriSafe recognizes the thousands of volunteer hours donated by our board, members and informal partners who have championed our cause. Every hour donated to our mission is a priceless hour bringing farmers closer to a wellness state.

Rapid Response

Responding to emerging issues requires a well-planned approach and alignment of existing partners. Our integrated network is designed to provide a rapid response to important changes that can threaten the health and safety of farm families. AgriSafe was one of the first organizations to listen to what concerned farmers and the first to react.

Over a **1000** people read AgriSafe in Action newsletters

Stakeholder Engagement Impact

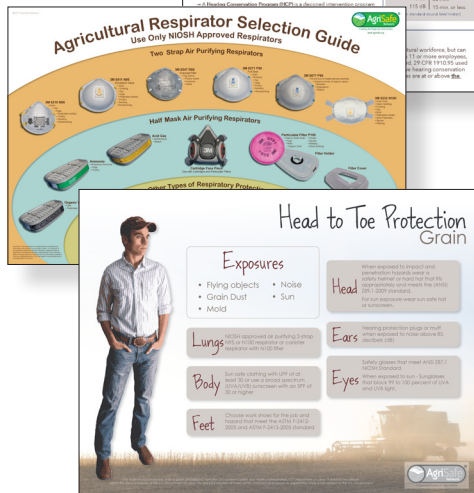
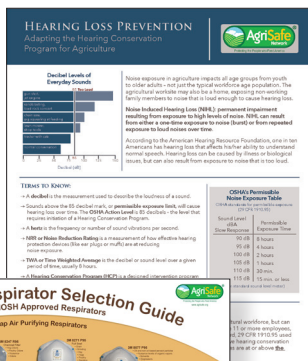
80 volunteer hours were donated in 2014 from experts in the field who presented in our webinar series. Their dedication and knowledge made it possible to reach important benchmarks. **95%** of participants in the live NRHA webinars indicated they learned something new

College Health

AgriSafe delivers value on many levels but none as obvious as in our work with college students. *Invest in Your Health* impacted over 400 students at universities and colleges across the country. Evaluation results showed that students valued the screening sessions and felt empowered to retain their new knowledge as they pursue their farming ambitions. CHS foundation is the official sponsor of this initiative.

3M donated well over **\$30,000** in safety supplies for startup kits for college health students

At the Farm Progress Show **450 Ag producers** visited the AgriSafe exhibit to learn about protecting their lungs.



2014 Resources

Hearing Conservation Fact Sheet

This fact sheet provides information on adapting the hearing conservation program for agriculture with useful tools including OSHA's Permissible Noise Exposure Table, Points for Clinicians and an easy to navigate OSHA Hearing Conservation Program Decision Algorithm.

Respiratory Selection Poster

Choosing the correct respirator for a specific agricultural task can be confusing. This poster simplifies the choices available that meet NIOSH safety standards.

Heat Illness Guide

This resource includes factors associated with heat related illnesses and heat index information with protective measures for agricultural workers who perform work in a wide range of environmental conditions.

Head to Toe PPE for Grain, Swine and Pesticides

These producer education resources provide clear direction on selecting the correct Personal Protective Equipment for the specific farm task.

Understanding OSHA's Agricultural Standards

The purpose of this fact sheet is to identify the Occupational Safety and Health Administration (OSHA) standards directed toward production agriculture, define and discuss the agricultural exemptions, and what they mean to managers and workers.

Financial Statement

Support & Revenue

Grant Income	\$342,003
Membership Dues	\$7,542
Sales of Safety Products	\$346
Interest	\$363

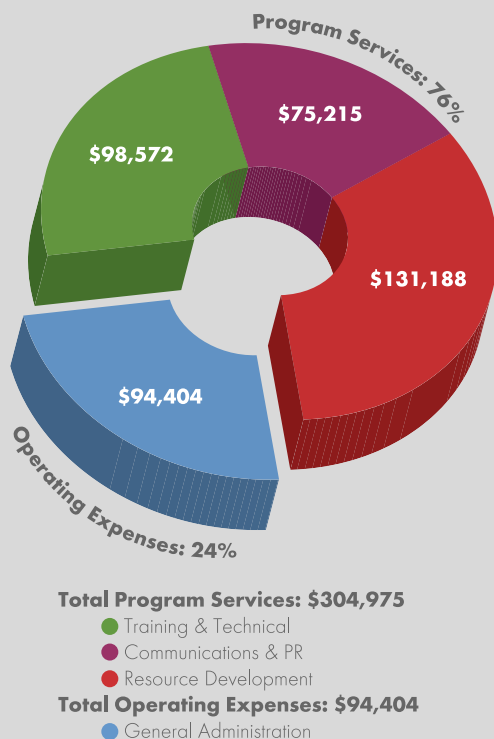
Total Support & Revenue \$350,254

Total Expenses \$399,379

Change in Net Assets (\$49,125)

Net Assets at Beginning of Year \$173,755

Net Assets at End of Year \$124,629



AgriSafe Receives Three Important Grants

Lungs for Life

The aim of this proposal is to develop standards of clinical practice for a respiratory program (Lungs for Life) that has intrinsic value to the agricultural community.

Rural Health Network Planning Grant in Nebraska

Nebraska health care providers share their expertise, passion and dedication to improve the lives of farm families through a collaborative network. This network will follow a population public health approach to improving the quality of care for Nebraska farmers and future generations.

OSHA Susan Harwood Training Grant

OSHA funded the development of five new AgriSafe curriculums:

1. Stress and Mental Health
2. Zoonotic Diseases
3. Womens Health in Agriculture
4. Safe Operation of a Crop Applicator
5. Manure Pit Foaming Safety Training



Protecting the People who Feed America

www.agrisafe.org

866.312.3002

info@agrisafe.org